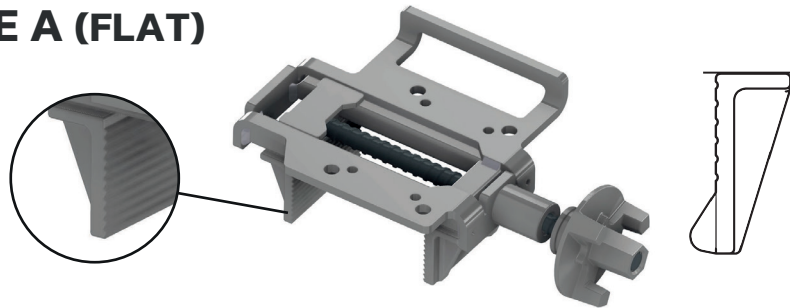


VIBRATION RANGE

CLAMPS

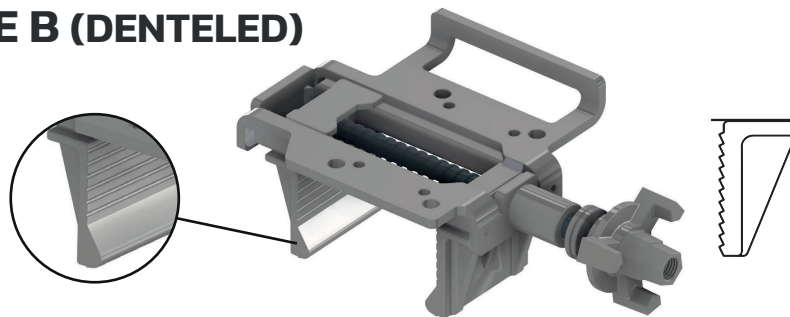
For external vibrators

TYPE A (FLAT)



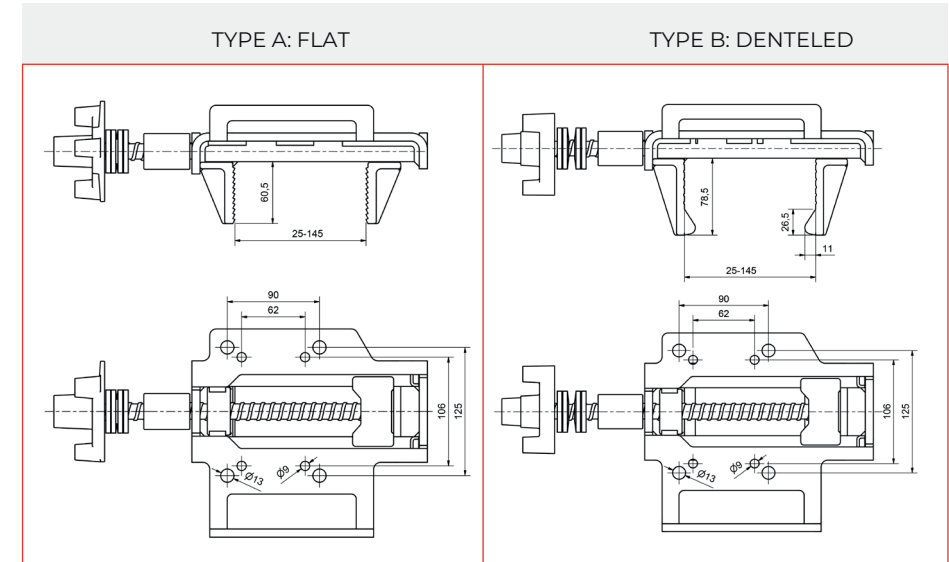
Model ref. 242054 Clamp weight: 4.5kg Max. opening: 145mm

TYPE B (DENTELED)



Model ref. 242055 Clamp weight: 5kg Max. opening: 134mm

Dimensions



Formwork compatibility

TYPE A: FLAT	TYPE B: DENTELED
<ul style="list-style-type: none"> -DOKA: H 20, Top 50, FF 20 -PERI: VT 20K, GT 24, VARIO GT 24 -HÜNNEBECK: H 20, R 24, GF 24, ES 24 -MEVA: H 20 -NOE: H 20 -PASCHAL: H 20 	<ul style="list-style-type: none"> -DOKA: Framax XLife, Alu Framax XLife -PERI: Trio -MEVA: StarTec, Mammut -NOE: NOEtop

*For compatibility with other models and brands of formwork, please consult.

- The clamps have a safety strap
- Thanks to their quick coupling, they save time in assembly and operation

- Clamps available for VEA 650, VET/VEM 100, 150 and 300 models

- Fixing screws are not included with the clamps

*Ref. 42201: 8mm for VEM/VET 100/150; and Ref. 42101: 12mm for VEM, VEM 300 and VEA